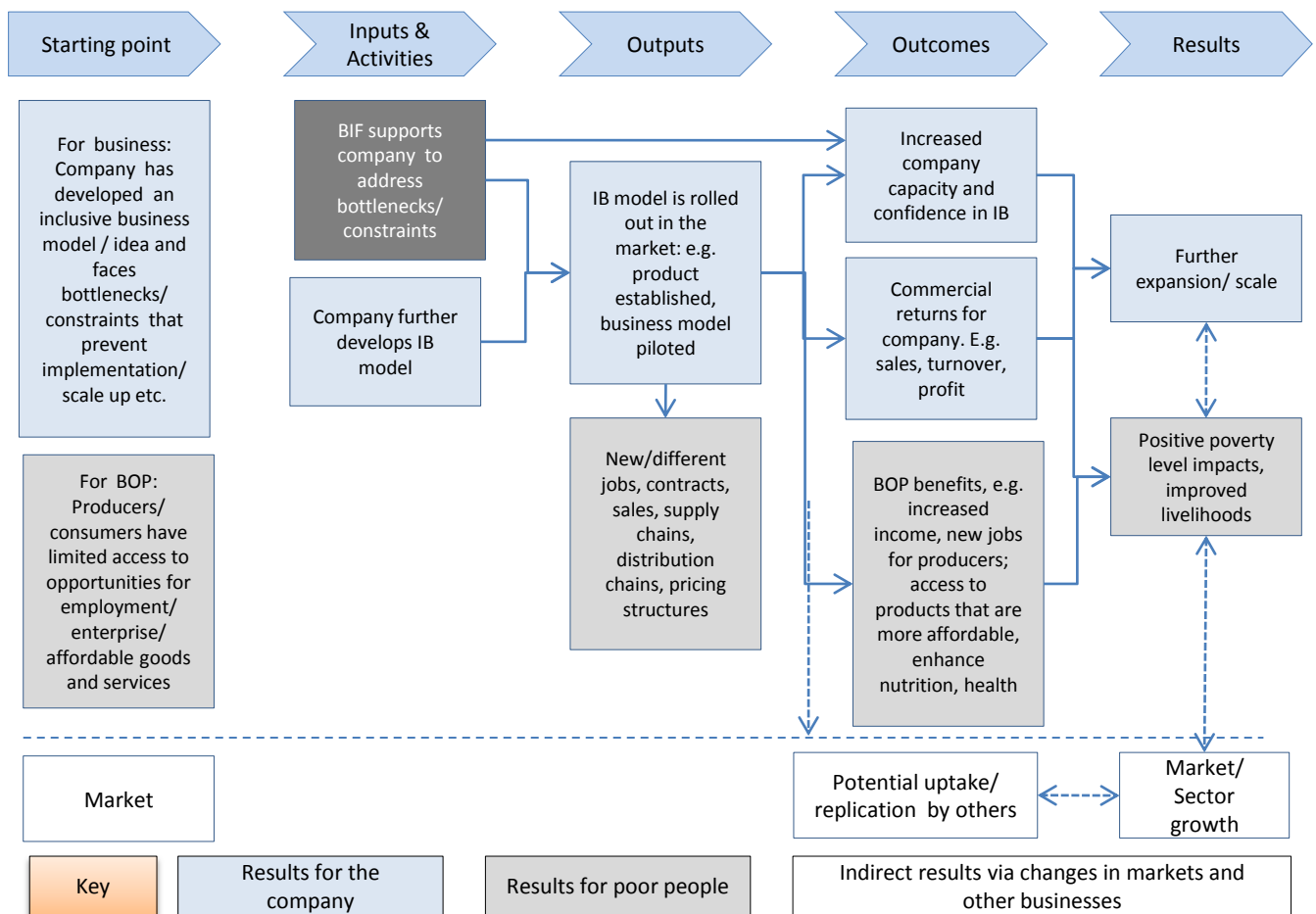


The Business Innovation Facility (BIF) supports companies as they develop or scale up innovative 'inclusive business models' (IB), by providing advice, facilitation, and technical input.

Facility support catalyses further development of inclusive business by the private sector. Each project that BIF supports is intended to generate commercial returns for the company, as well as positive results for development. The results chain is one way of teasing out the array of impacts. As this chain shows, direct benefits for people at the base of the pyramid, returns to the company, and indirect effects on wider markets and sectors can all reinforce each other and help deliver results at scale.

Illustrative results chain for BIF-supported cost-sharing project



This is a generic results chain that draws on several projects. In reality, there is great diversity across projects. Further information about specific projects is available on the Practitioner Hub www.businessinnovationfacility.org (see Projects and Progress). For more information on impacts and results tracking, view Impacts on the Hub.

For the latest news on the Business Innovation Facility and up-to-date information on inclusive business, join the Practitioner Hub at www.businessinnovationfacility.org

The Business Innovation Facility is managed for the UK Department for International Development (DFID) by PwC in alliance with the International Business Leaders Forum (IBLF), Accenture Development Partnerships (ADP), Imani Development, the Convention on Business Integrity, Renaissance Consultants Ltd. and Intelcap. Contact enquiries@businessinnovationfacility.org